

BROOK  
TAVERNER

SINCE 1912

# HOTELS & HOSPITALITY



THE PERFECT UNIFORM FOR EVERY BUSINESS, EVERY ROLE, EVERY TIME.

# THE ROLE OF CORPORATEWEAR IN THE HOTEL & HOSPITALITY SECTORS

In the hotel & hospitality industries, uniforms play a vital role in projecting professionalism and consistency, creating a sense of reliability for guests and staff alike. This visual unity among team members isn't just about aesthetics, it's practical, too. Guests can swiftly identify who to approach for assistance, facilitating smoother interactions and enhancing their experience.

At Brook Taverner, we understand the critical role uniform plays in shaping identity. With vast experience supplying a diverse range of teams in the hotel and hospitality sectors worldwide, we provide a stock-supported selection of styles, fabrics, and colours. Working together with our distributors, we are confident we will deliver the perfect uniform for every business, every role, every time.



|                  |         |
|------------------|---------|
| FRONT OF HOUSE   | 4 - 5   |
| MANAGEMENT       | 6 - 7   |
| SERVICE / FORMAL | 8 - 9   |
| SERVICE / CASUAL | 10 - 11 |
| HOUSEKEEPING     | 12 - 13 |
| SPA & WELLNESS   | 14 - 15 |
| MAINTENANCE & FM | 16 - 17 |
| OUTDOOR          | 18 - 19 |
| INDEX            | 22 - 23 |





# FRONT OF HOUSE

First impressions are crucial, and the right uniform for the Front of House team can set the tone from the moment guests arrive. Opt for tailored, high-quality pieces that communicate a welcoming approachability and professionalism, allowing staff to look fresh throughout long shifts in highly-visible roles.



1. **RAPPORT COLLECTION** Jacket & Trouser / **CASUALS & SEPARATES** Premium Knitwear Rollneck
2. **CASUALS & SEPARATES** Performance Knitwear Turtleneck
3. **SHIRTS & BLOUSES** Premium Cotton Shirt
4. **SOPHISTICATED COLLECTION** Suit / **CASUALS & SEPARATES** Check Designs Waistcoat
5. **SHIRTS & BLOUSES** Crepe de Chine Blouses / **ECLIPSE COLLECTION** Trousers
6. **ECLIPSE COLLECTION** Jackets & Trousers / **SHIRTS & BLOUSES** Crepe de Chine Blouse & Premium Cotton Shirt
7. **SIGNATURE COLLECTION** Jacket & Trouser / **SHIRTS & BLOUSES** Pussy Bow Blouse
8. **SHIRTS & BLOUSES** Crepe de Chine Blouse / **ECLIPSE COLLECTION** Trouser
9. **CASUALS & SEPARATES** Shirt Dress & Trainers / **RAPPORT COLLECTION** Jacket & Trouser
10. **CASUALS & SEPARATES** T-Shirt & Trainers / **ECLIPSE COLLECTION** Trouser
11. **ECLIPSE COLLECTION** Jackets / **SHIRTS & BLOUSES** Satin Blouse & Premium Cotton Shirt



# MANAGEMENT

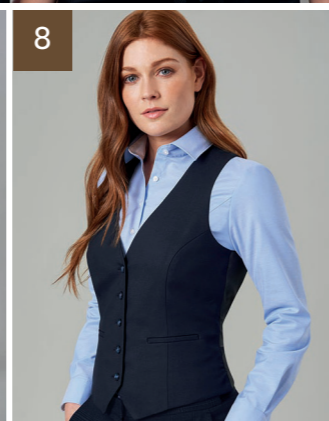
The management team's uniform doesn't just signal leadership; it fosters unity and shared responsibility among all employees. By setting a high standard in appearance, management embodies the professionalism expected at every level of the establishment and reinforces an inclusive, hands-on approach to leadership.



1. **CASUALS & SEPARATES** Premium Knitwear Rollnecks
2. **JERSEY STRETCH COLLECTION** Dress
3. **SOPHISTICATED COLLECTION** Jackets / **SHIRTS & BLOUSES** Premium Cotton Shirt & Pussy Bow Blouse
4. **SIGNATURE COLLECTION** Suit, Jacket & Skirt / **SHIRTS & BLOUSES** Premium Cotton Shirts
5. **SHIRTS & BLOUSES** Pro-Active Stretch Pique Shirts
6. **ECLIPSE COLLECTION** Jacket / **SHIRTS & BLOUSES** Royal Oxford Shirt
7. **CASUALS & SEPARATES** Tweed Jacket / **SHIRTS & BLOUSES** Cotton Rich Shirt
8. **ECLIPSE COLLECTION** Jackets / **SHIRTS & BLOUSES** Royal Oxford Shirts
9. **RAPPORT COLLECTION** Jacket & Trouser / **CASUALS & SEPARATES** Premium Knitwear Rollneck
10. **SHIRTS & BLOUSES** Crepe de Chine Blouse / **SOPHISTICATED COLLECTION** Trouser
11. **RAPPORT COLLECTION** Jackets & Trousers / **CASUALS & SEPARATES** Premium Knitwear Rollnecks

# SERVICE / FORMAL

Whether in a high-end restaurant or transitioning to an evening uniform, formal service staff attire typically embraces tradition with timeless style. Classic colour combinations, complemented by waistcoats and ties, create the impression of refined service to enhance the overall dining experience.



“It has been, and continues to be, our responsibility to fill the earth with the light and warmth of hospitality.”  
– Conrad Hilton

1. ECLIPSE COLLECTION Jacket & Trouser / SHIRTS & BLOUSES Premium Cotton Shirt
2. PERFORMANCE COLLECTION Waistcoat / SHIRTS & BLOUSES Stretch Cotton Blend Shirt
3. ECLIPSE COLLECTION Waistcoats / SHIRTS & BLOUSES Cotton Rich Shirts
4. ONE COLLECTION Waistcoats, Trouser & Skirt / SHIRTS & BLOUSES Stretch Cotton Blend Shirts
5. SHIRTS & BLOUSES Stretch Cotton Blend Shirts
6. SHIRTS & BLOUSES Business Essential Shirts
7. ONE COLLECTION Trouser / SHIRTS & BLOUSES Classic Oxford Shirt
8. TODAY COLLECTION Waistcoat / SHIRTS & BLOUSES Stretch Oxford Shirt
9. SHIRTS & BLOUSES Business Essential Shirt / ONE COLLECTION Trouser

# SERVICE / CASUAL

As a highly customer-facing role, service staff play a fundamental part in creating the right impression. Brands can incorporate softer tones and informal, yet coordinated, styles in their uniform to place an emphasis on approachability. A well-chosen, high-quality uniform keeps staff comfortable and smart throughout the working week.



1. CASUALS & SEPARATES Premium Cotton Polo
2. CASUALS & SEPARATES T-Shirts & Chinos
3. CASUALS & SEPARATES Breton Tops & Chinos
4. CASUALS & SEPARATES Check Designs Waistcoat & T-Shirt
5. CASUALS & SEPARATES Breton Top
6. RAPPORT COLLECTION Waistcoat & Trouser / SHIRTS & BLOUSES Stretch Top
7. CASUALS & SEPARATES Tweed Waistcoats / SHIRTS & BLOUSES Royal Oxford Shirts
8. SHIRTS & BLOUSES Royal Oxford Shirt / CASUALS & SEPARATES Chino & Trainers
9. SHIRTS & BLOUSES Business Casual Shirts / CASUALS & SEPARATES Check Designs Trousers
10. CASUALS & SEPARATES Trainers



# HOUSEKEEPING

We understand the importance of attention to detail when it comes to outfitting housekeeping teams. Practical yet subtle features like convenient key loops and strategically-placed pockets increase efficiency and allow staff to deliver outstanding service.

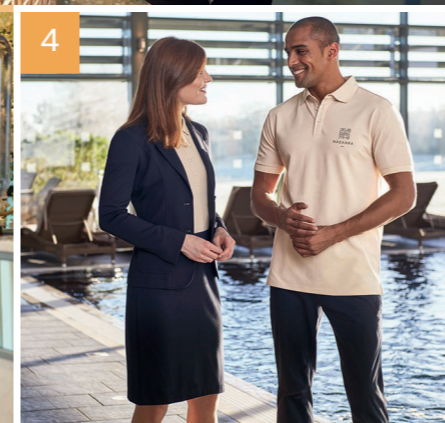


1. CASUALS & SEPARATES Tunic / JERSEY STRETCH COLLECTION Capri Trouser
2. CASUALS & SEPARATES Premium Cotton Polos & Chinos
3. SHIRTS & BLOUSES Classic Oxford Shirt
4. CASUALS & SEPARATES Tunic / RAPPORT COLLECTION Trouser
5. TODAY COLLECTION Cargos / CASUALS & SEPARATES Pro-Active Polos
6. SHIRTS & BLOUSES Stretch Top
7. CASUALS & SEPARATES Premium Cotton Polo / JERSEY STRETCH COLLECTION Skirt

"When customers feel well  
cared for, they become loyal  
advocates." – Isadore Sharp

# SPA & WELLNESS

Spa & Wellness uniforms must visually support the purpose of each space. Soft fabrics and calming colours reinforce the serene ambiance of the spa, while vibrant shades and flexible materials promote the dynamic energy expected of fitness facilities, whether indoors or out.



1. **CASUALS & SEPARATES** Premium Cotton Polo / **JERSEY STRETCH COLLECTION** Capri Trouser
2. **CASUALS & SEPARATES** Breton Top & Chino
3. **CASUALS & SEPARATES** T-Shirt, Chino Shorts & Trainers
4. **JERSEY STRETCH COLLECTION** Jacket & Skirt / **CASUALS & SEPARATES** Premium Cotton Polos & Chino
5. **CASUALS & SEPARATES** Pro-Active Polo & Chino
6. **CASUALS & SEPARATES** Tunic
7. **CASUALS & SEPARATES** Chino Cargos & Trainers

# MAINTENANCE & FM

When functionality and durability are paramount, uniforms must endure the physical demands of daily tasks. Outfitting active employees in practical, well-designed clothing not only boosts their performance but also ensures the smooth, efficient operation of facilities, supporting both guest and employee satisfaction.



1



3



5



6

1. **TODAY COLLECTION** Cargos / **CASUALS & SEPARATES** Performance Knitwear V-neck
2. **OUTERWEAR** Pro-Active Padded Jacket & Pro-Active Fleece 1/4 Zip
3. **TODAY COLLECTION** Cargo / **SHIRTS & BLOUSES** Business Essential Shirt
4. **OUTERWEAR** Premium Fleece Gilet & Jacket / **TODAY COLLECTION** Cargos
5. **CASUALS & SEPARATES** T-Shirts, Pro-Active Trousers & Trainers / **OUTERWEAR** Pro-Active Padded Gilet
6. **CONCEPT COLLECTION** Jackets & Trousers
7. **OUTERWEAR** Waterproof Mac / **CASUALS & SEPARATES** Jeans
8. **SHIRTS & BLOUSES** Business Essential Shirt
9. **CASUALS & SEPARATES** Sweatshirt, Pro-Active Trouser & Trainers
10. **CONCEPT COLLECTION** Trouser / **SHIRTS & BLOUSES** Classic Oxford Shirt
11. **OUTERWEAR** Pro-Active Fleece Jackets / **CASUALS & SEPARATES** Chinos



4



7



8



9



10



11

# OUTDOOR

Work-ready, whatever the weather. Providing staff with appropriate outerwear is essential for roles that involve time outdoors as it helps them stay warm and dry while preserving the professional look of the uniform beneath. This way, staff can stay focused on their duties without being hindered by uncomfortable weather conditions.

BROOK  
TAVERNER

SINCE 1912

1. OUTERWEAR Hybrid Gilet
2. OUTERWEAR Waterproof Mac
3. OUTERWEAR Raincoats
4. OUTERWEAR Raincoat Hood
5. OUTERWEAR Premium Quilted Jacket
6. OUTERWEAR Pro-Active Padded Jacket
7. OUTERWEAR Overcoats
8. OUTERWEAR Premium Fleece Gilet & Jacket

"There's no bad weather,  
only unsuitable clothing."  
– Alfred Wainwright





# BROOK TAVERNER

SINCE 1912

## LOOK & FEEL YOUR BEST WITH BROOK TAVERNER

We are passionate about what we do and are delighted to support the thousands of people who go to work every day in a Brook Taverner garment.

We're very proud to partner with brand leaders in fabric performance and comfort to ensure each and every style looks good and feels great with every wear, week after week.



Birla Spunshades™ Viscose



[www.LYCRA.com](http://www.LYCRA.com)



Easily identify the garments shown throughout the brochure.

## FRONT OF HOUSE – Pages 4 - 5

- MARGOT Jacket, Denim (2390A) & ELEANOR Trouser, Denim (2392A) / ATHENS Jumper, Oatmeal (2398B)
- GOLDEN Jumper, Black (2389D)
- CHELFORD Shirt, Sky Blue (7643B)
- CASSINO Jacket, Black (5985D) / CASSINO Trouser, Black (8655D) / EMILIO Waistcoat, Grey Check (1726C)
- She wears (left): BERGAMO Blouse, Pink (2419K) She wears (right): COMO Blouse, Pink (2418K)
- She wears: PERDITA Jacket, Navy (2425B) / OPHELIA Trouser, Navy (2276B) / BERGAMO Blouse, White (2419A) He wears: FERDINAND Jacket, Navy (5484B) / PEGASUS Trouser, Navy (8754B) / CHELSEA Shirt, White (7762A)
- CALVI Jacket, Navy Check (2331A) & TORINO Trouser, Navy Check (2345A) / ANDRIA Blouse, Sky Blue (2368B)
- VARENNA Blouse, Black (2433D) / ROSALIND Trouser, Charcoal Pin Dot (2381C)
- She wears: GEMINI Dress, Sand (2442B) He wears: WILLIAM Jacket, Sand (5427B) & OLIVER Trouser, Sand (8025B) / HIXON Trainers, Brown (5533C)
- SHERIDAN T-Shirt, White (2412F) / CORA Trouser, Black (2424D) / ELSA Trainers, White (2444A)
- She wears: VEGA Jacket, Navy Pin Dot (2356A) / RAVENNA Blouse, Gold (2362F) He wears: PEGASUS Jacket, Navy Pin Dot (3551A) / CHELFORD Shirt, White (7643A)

## MANAGEMENT – Pages 6 - 7

- He wears: OSLO Jumper, Cream (4568G) She wears: ATHENS Jumper, Cream (2398G)
- BELINDA Dress, Navy (2380A)
- He wears: CASSINO Jacket, Black (5985D) / ESTE Shirt, White (7978A) She wears: ROSA Jacket, Black (2353D) / FLAVIA Blouse, White (2369A)
- He wears: CASSINO Jacket, Navy Check (3834A) / CASSINO Trouser, Navy Check (8846A) / ANDORA Shirt, White Herringbone (7656A) She wears: CALVI Jacket, Navy Check (2331A) / NUMANA Skirt, Navy Check (2333A) / VILLETA Shirt, White Herringbone (2247A)
- She wears: WILLOW Shirt, White (2437A) He wears: KODIAK Shirt, White (4787A)
- PHENE Jacket, Charcoal Pin Dot (3552C) / TORONTO Shirt, White (7882A)
- QUEBEC Jacket, Grey Brown Check (3836E) / ALBA Shirt, Navy (7640H)

## MANAGEMENT – Pages 6 - 7 Continued

- She wears: PERDITA Jacket, Navy (2425B) / ROCHELLE Jeans, Vintage (2374C) / ASPEN Shirt, Sky Blue (2319E) He wears: FERDINAND Jacket, Navy (5484B) / BOULDER Jeans, Vintage (8958C) / TORONTO Shirt, Sky Blue (7882E)
- WILLIAM Jacket, Grey Melange (5427C) / OLIVER Trouser, Grey Melange (8025C) / OSLO Jumper, Black (4568D)
- VARENNA Blouse, White (2433A) / BELLA Trouser, Charcoal (2435C)
- She wears: MARGOT Jacket, Denim (2390A) / ELEANOR Trouser, Denim (2392A) / ATHENS Jumper, Oatmeal (2398B) He wears: WILLIAM Jacket, Denim (5427A) / OLIVER Trouser, Denim (8025A) / OSLO Jumper, Oatmeal (4568B)

## SERVICE / FORMAL – Pages 8 - 9

- ARIEL Jacket, Black (2272D) / ROSALIND Trouser, Black (2381D) / PROSECCO Shirt, White Herringbone (2283A)
- CAPITAL Waistcoat, Charcoal (1300C) / PISA Shirt, White (7721A)
- She wears: LARISSA Waistcoat, Navy Pin Dot (2293A) / ORIANO Shirt, White (2440A) He wears: PROTEUS Waistcoat, Navy Pin Dot (1449A) / LENNO Shirt, White (4786A)
- She wears: LUNA Waistcoat, Black (2257D) / SOAVE Shirt, White (2269A) He wears: MERCURY Waistcoat, Black (1295D) / PISA Shirt, White (7721A)
- She wears: AMELIA Shirt, White (2403A) He wears: VOLTERRA Shirt, White (4571A)
- He wears: VESTA Shirt, Black (7743D) She wears: EOS Shirt, Black (2271D)
- VENUS Trousers, Black (2256D) / ALBANY Shirt, White (2359A)
- TOULOUSE Waistcoat, Navy (2328A) / MIRABEL Shirt, Sky Blue (2361E)
- VULCAN Shirt, White (7889A) / MARS Trouser, Black (8648D)

## SERVICE / CASUAL – Pages 10 - 11

- FREDERICK Polo, Grey Marl (4222C)
- She wears: MARION T-Shirt, Navy (2411A) / LIBERTY Chino, Stone (2404F) He wears: MILLER T-Shirt, Navy (4635A) / LEO SLIM FIT Chino, Stone (8058F)

## SERVICE / CASUAL – Pages 10 - 11 Continued

- He wears: EDMUND Breton Top, Navy/White (4721B) / LEO SLIM FIT Chino, Tan (8058B) She wears (middle): LUCY Breton Top, Navy/White (2430B) / LIBERTY Chino, Tan (2404B) She wears (right): KATY Breton Top, White/Navy (2429A) / LIBERTY Chino, Tan (2404B)
- OLIVIA Waistcoat, Grey Check (2363C) / MARION T-Shirt, Black (2411D)
- EDMUND Breton Top, White/Navy (4721A)
- BEATRICE Waistcoat, Sand (2391B) / ELEANOR Trouser, Denim (2392A) / SASSA Stretch Top, White (2267A)
- He wears: MEMPHIS Waistcoat, Grey Brown Check (1463E) / TORONTO Shirt, White (7882A) / LEO SLIM FIT Chino, Tan (8058B) She wears: NASHVILLE Waistcoat, Grey Brown Check (2310E) / ASPEN Shirt, White (2319A) / LIBERTY Chino, Tan (2404B)
- TORONTO Shirt, Blue (7882B) / LEO SLIM FIT Chino, Stone (8058F) / HIXON Trainers, Navy (5533B)
- She wears: BANFF Shirt, Denim (2323A) / STELLA Trouser, Grey Check (2364C) He wears: JASPER Shirt, Denim (7886A) / FABIAN Trouser, Grey Check (8934C)
- ELSA Trainers, White (2444A)

## HOUSEKEEPING – Pages 12 - 13

- LOCKHART Tunic, Black (2402D) / CAMILA Trouser, Black (2371D)
- He wears: HAMPTON Polo, Sky Marl (4223E) / LEO CLASSIC FIT Chino, Black (8059D) She wears: ARLINGTON Polo, Sky Marl (2372E) / LIBERTY Chino, Black (2404D)
- TUCSON Shirt, White (4051A)
- LOCKHART Tunic, Denim (2402E) / ELEANOR Trouser, Sand (2392B)
- He wears: TOURS Cargo Trouser, Black (8968D) / COLUMBIA Polo, White (4224A) She wears: NANTES Cargo Trouser, Black (2375D) / LAUREL Polo, White (2373A)
- SASSA Stretch Top, White (2267A)
- ARLINGTON Polo, White (2372A) / LEONA Skirt, Black (2370D)

## SPA & WELLNESS – Pages 14 - 15

- ARLINGTON Polo, Sand (2372H) / CAMILA Trouser, Black (2371D)
- LUCY Breton Top, White/Navy (2430A) / LIBERTY Chino, Black (2404D)
- MILLER T-Shirt, Navy (4635A) / LEO Chino Shorts, Navy (8036A) / HIXON Trainers, Navy (5533B)

## SPA & WELLNESS – Pages 14 - 15 Continued

- She wears: LIBRA Jacket, Navy (2379A) / LEONA Skirt, Navy (2370A) / ARLINGTON Polo, Sand (2372H) He wears: HAMPTON Polo, Sand (4223H) / LEO SLIM FIT Chino, Midnight (8058G)
- COLUMBIA Polo, Navy (4224B) / LEO SLIM FIT Chino, Tan (8058B)
- LOCKHART Tunic, Sand (2402B)
- DURHAM Chino Cargo, Black (8027D) / ROCHESTER Fleece Gilet, Black (4643D) / HIXON Trainers, Black (5533D)

## MAINTENANCE & FM – Pages 16 - 17

- NANTES Cargo Trouser, Black (2375D) / ATLANTA Jumper, Black (2307D)
- She wears: VENICE Padded Jacket, Black (2413D) He wears: ASHTON Fleece ¼ Zip, Black (4642D)
- NANTES Cargo Trouser, Black (2375D) / ATHENA Shirt, White (2394A)
- She wears: CINCINNATI Fleece Gilet, Navy (4221A) / NANTES Cargo Trouser, Navy (2375A) He wears: BALTIMORE Fleece Jacket, Navy (4220A) / TOURS Cargo Trouser, Navy (8968A)
- He wears: MILLER T-Shirt, White (4635F) / FINLAY Trouser, Navy (8107A) / HIXON Trainers, Navy (5533B) She wears: SKYLINE Padded Gilet, Navy (2414A) / MARION T-Shirt, White (2411F) / RUBY Trousers, Navy (2445A) / ELSA Trainers, Navy (2444B)
- She wears: HEBE Jacket, Navy (2254A) He wears: ZEUS Jacket, Navy (3124A)
- SPENCER Waterproof Mac, Navy (9177A) / BOULDER Jeans, Vintage (8958C)
- JUNO Shirt, White (7742A)
- OAKLAND Sweatshirt, Burgundy (4632E) / FINLAY Trouser, Navy (8107A) / HIXON Trainers, Navy (5533B)
- DELTA Trouser, Navy (8515A) / WHISTLER Shirt, White (4050A)
- She wears: CLARE Fleece Jacket, Navy (2406A) / LIBERTY Chino, Airforce (2404C) He wears: LEE Fleece Jacket, Navy (4641A) / LEO SLIM FIT Chino, Airforce (8058C)

## OUTDOOR – Pages 18 - 19

- AUBURN Hybrid Gilet, Black (2439D)
- SPENCER Waterproof Mac, Navy (9177A) / BOULDER Jeans, Vintage (8958C)
- He wears: CHICAGO Raincoat, Navy (9887A) She wears: WASHINGTON Raincoat, Navy (2346A)
- WASHINGTON Raincoat, Navy (2346A)
- ORLANDO Quilted Jacket, Olive (4369E)
- VENICE Padded Jacket, Black (2413D)
- He wears: BOND Overcoat, Black (9760C) She wears: BURLINGTON Overcoat, Black (2261C)
- She wears: CINCINNATI Fleece Gilet, Fig (4221B) He wears: BALTIMORE Fleece Jacket, Navy (4220A)



Neofashion Europa GmbH  
Coswiger Str. 20  
Lutherstadt Wittenberg  
06886  
Deutschland

Tel: (+49) 3491 8730 488  
Fax: (+49) 3491 8730 573  
Email: [info@askullmann.de](mailto:info@askullmann.de)  
Web: [www.askullmann.com](http://www.askullmann.com)